

trackeRapp

An integrated workflow for running, cycling and swimming data

Installation

```
R> install.packages("trackeRapp")
```

Launching the interface

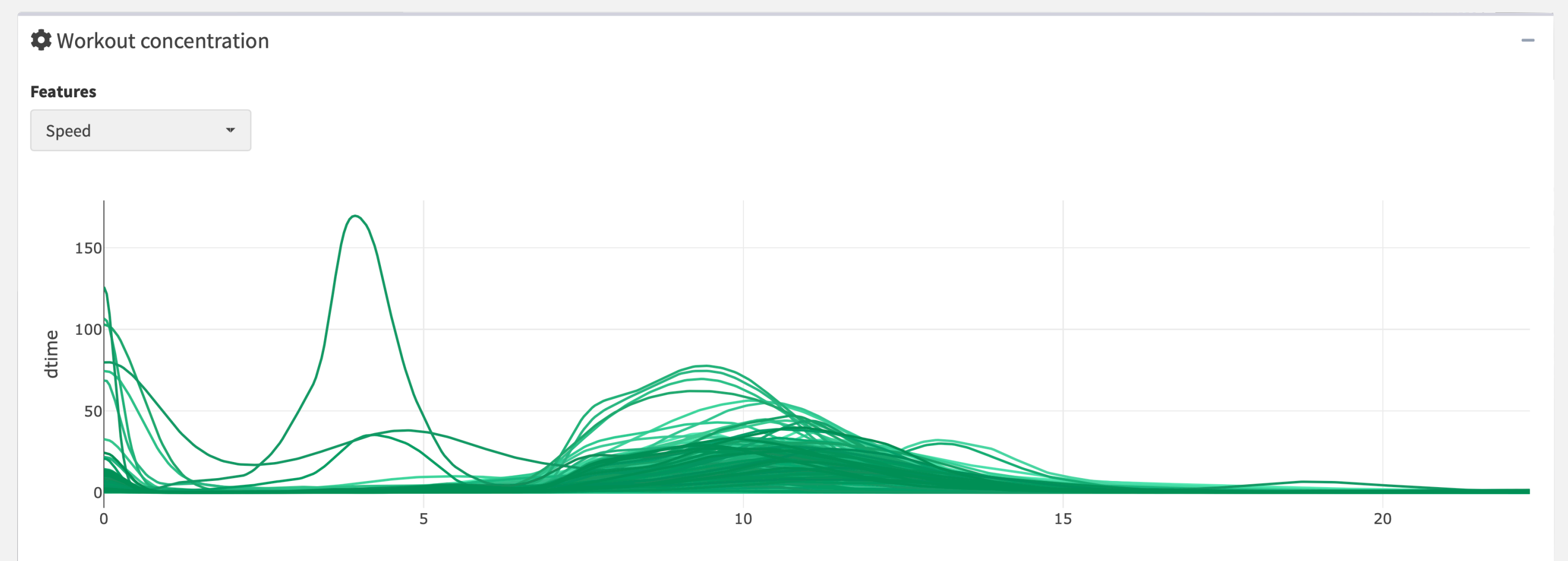
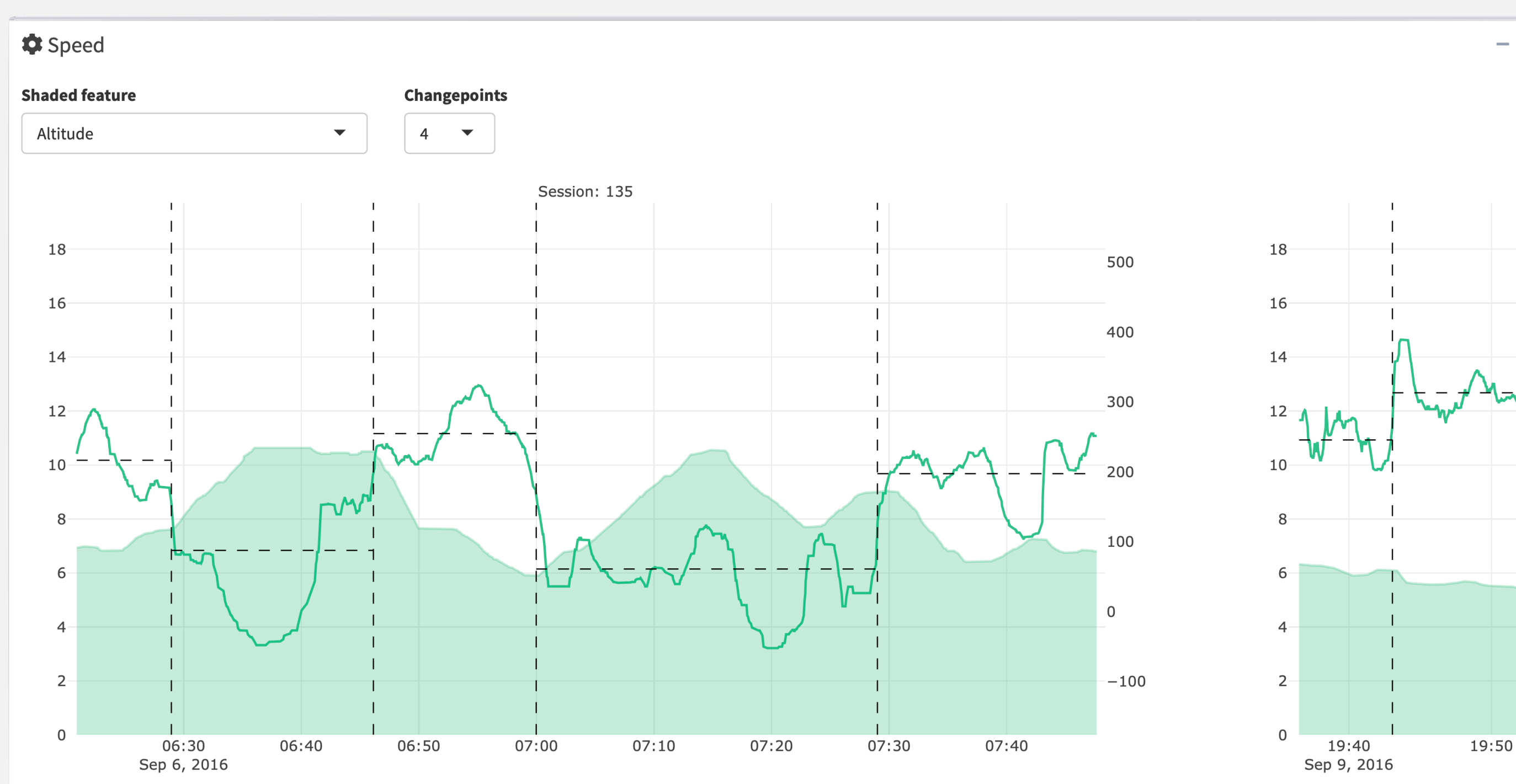
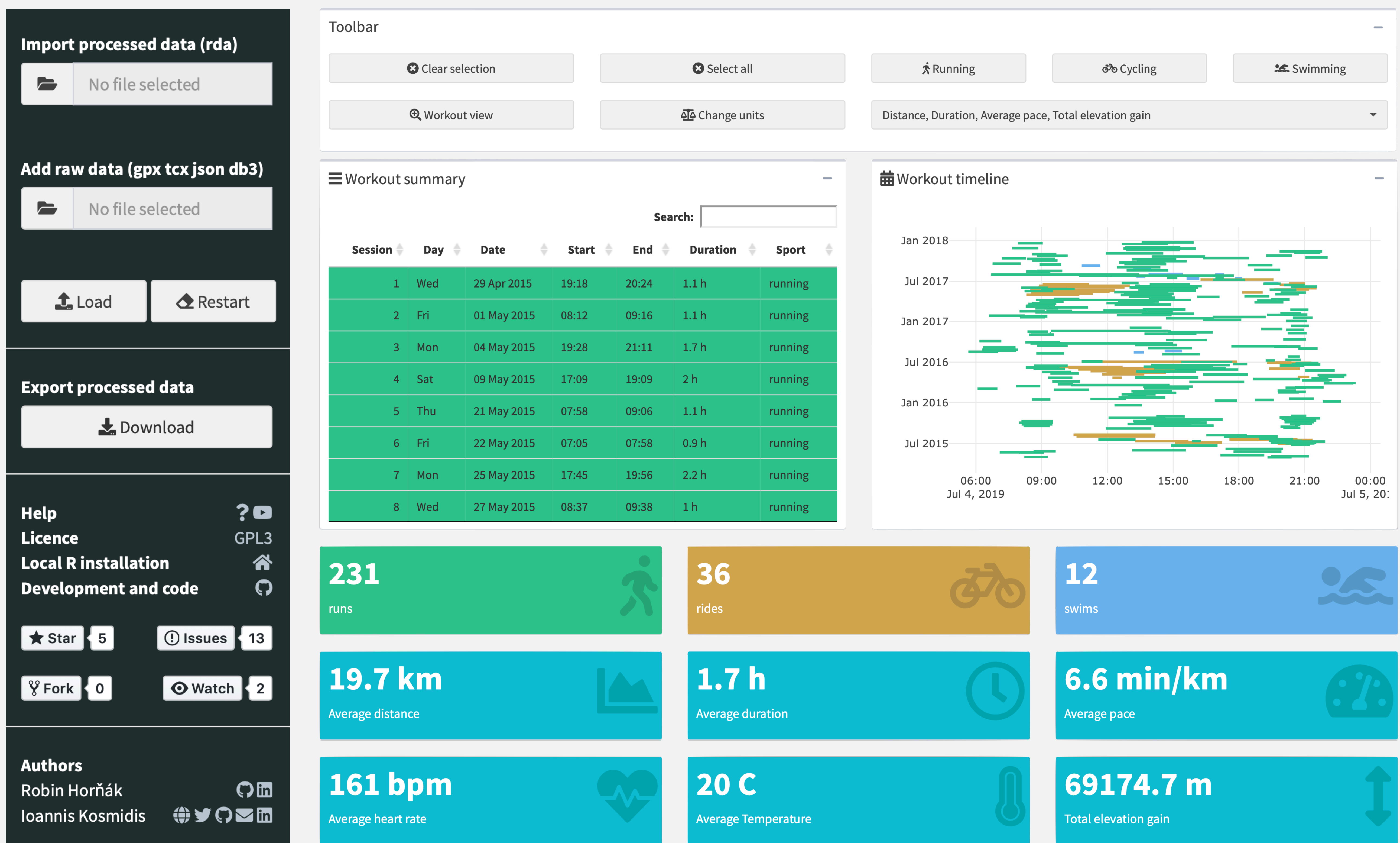
```
R> library("trackeRapp")
```

```
R> trackeRapp()
```

Ioannis Kosmidis, Robin Horňák



The Alan Turing Institute



☰ Data analysis workflow to track running, cycling and swimming

zoo changepoint sf mgcv

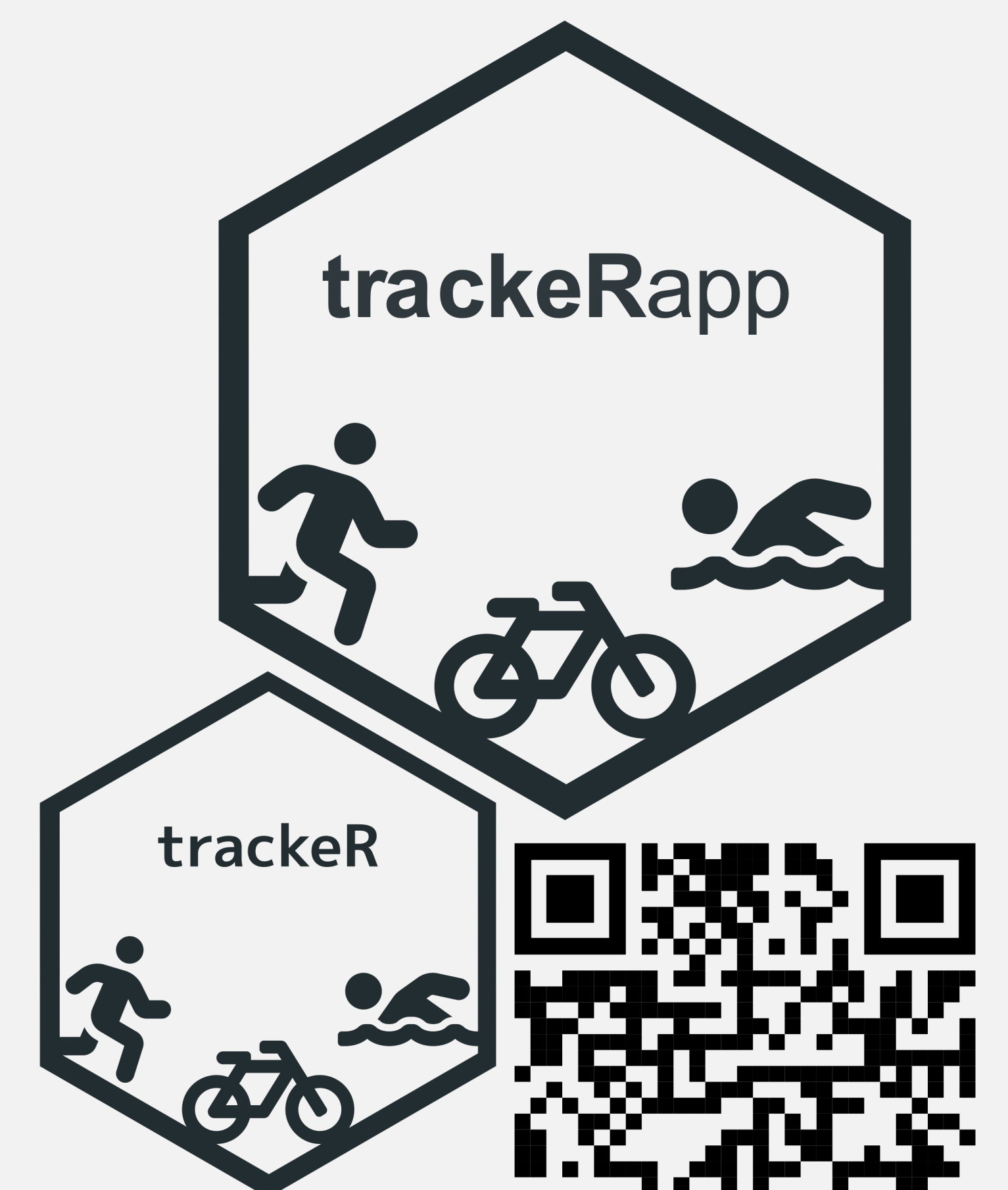
🖥️ Fully interactive interface

shiny plotly DT mapdeck

🔗 Leverages the power of trackeR

📦 GPL3 package in CRAN

📄 No data trails



also at www.trackerapp.com